



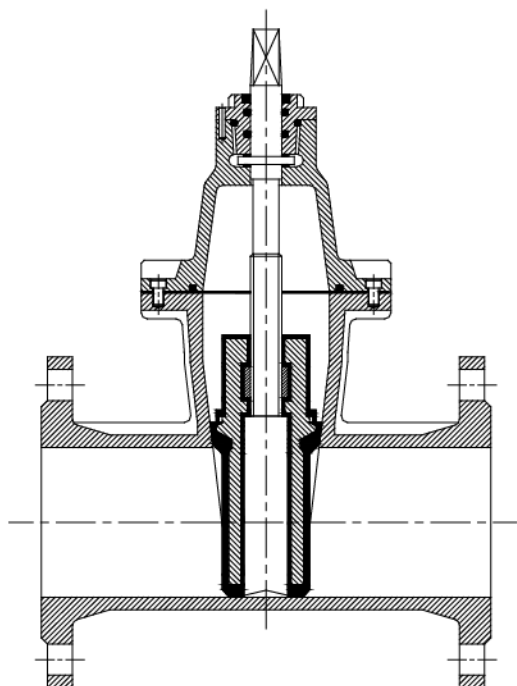
# SAUDI PIPES SYSTEMS CO.

## GATE VALVE GAF-102



Gate Valves, Resilient seated, full bore,  
Inside screw bolted bonnet,  
Fully removable part,  
Free maintenance, 100% water tight  
Non Rising Stem

Design According to BS-5163



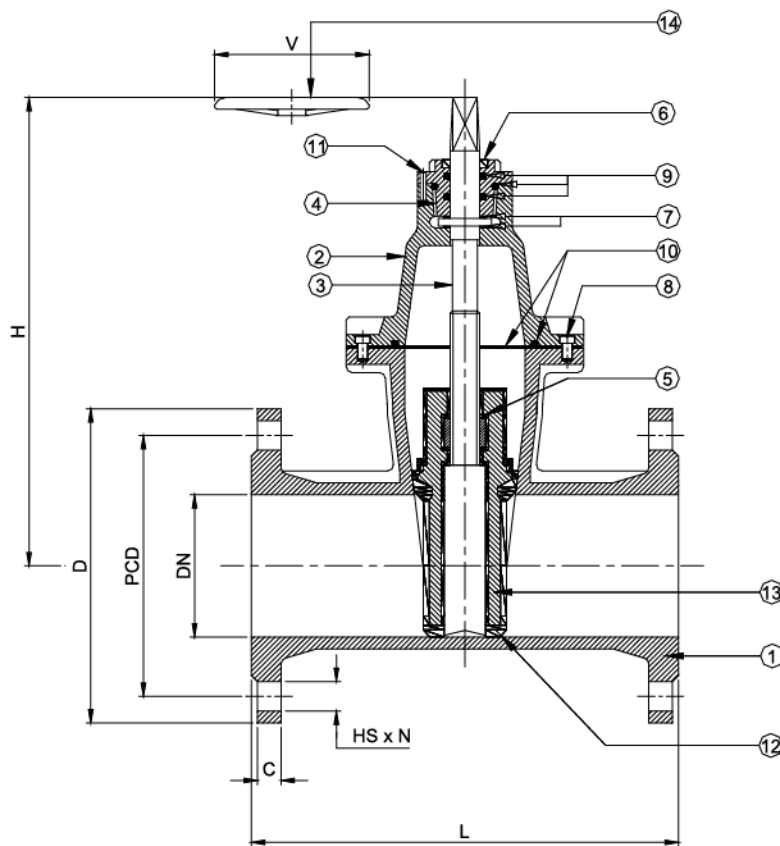
<b>Application</b>	For water and neutral liquids and sewage water
<b>Working Pressure</b>	10 / 16 / 25 Bars
<b>Working Temperature</b>	70° (up to + 110° on request)
<b>Face to Face</b>	According to BS 5163
<b>Flange</b>	According to BS 4504 / DIN 2501 / ISO 2531
<b>Operation</b>	Handwheel, extension spindle, flange adaptor, stem cap
<b>Closing</b>	Clockwise Direction
<b>Wedge</b>	Auto-guided in body with guide ribs ,Wedge with draining hole to avoid retention of water and ice
<b>Sealing Pressure</b>	16 Bars, according to DIN 3230/3-CI, the rubber coating of the wedge works always on compression
<b>Sealing on Stem</b>	Double packing, replaceable with valve under pressure and in the fully open position-with dust seal above the stem
<b>Coating</b>	Epoxy powder inside and outside 200-300 microns,
<b>Ductile Iron</b>	Ductile Iron GGG 50/40 to DIN EN 1563

*Design Mechanical Data, Dimension , Materials and weight are subject to change without notice*



# SAUDI PIPES SYSTEMS CO.

## GATE VALVE GAF-102



### COMPONENTS LIST :

1	BODY	Ductile Iron GGG50
2	COVER	Ductile Iron GGG50
3	STEM (SPINDLE)	St. steel SS304 / 316 L
4	LOCKING NUT	Brass Ms58 / Bronze
5	STEM NUT	Bronze C6680
6	PROTECTING RING	Neopren or EPDM
7	SLIDE RING	Hostaform
8	CYLINDER SCREW	St. steel 304/ 316 L
9	O-RING	Perbunan or EPDM
10	O-RING / GASKET	Perbunan or EPDM
11	CYLINDER PIN	St. steel 304/ 316 L
12	RESILIENT WEDGE	Vulcanized with NBR or EPDM
13	WEDGE	Ductile Iron GGG50
14	HANDWHEEL	Steel / Ductile Iron GGG50

Dimensions in mm

### PRESSURE TESTING: BODY – (1,5 x PN) SEAT – (1,1 x PN)

DN	50	65	80	100	125	150	200	250	300	350	400	450	500	600	
<b>L</b>	<b>BS-5163</b>	178	190	203	229	254	267	292	330	358	381	406	432	457	508
<b>D</b>		165	185	200	220	250	285	340	400	455	520	580	640	715	840
<b>V</b>		200	250	250	300	300	300	350	500	500	-	-	-	-	-
<b>H</b>		225	320	335	380	450	480	600	660	750	841	922	1022	1177	1379
<b>HS PN 10</b>		18	18	18	18	18	22	22	22	22	23	28	29	29	32
<b>HS PN 16</b>		18	18	18	18	18	22	22	26	26	28	31	31	35	37
<b>N-HOLES PN 10</b>		4	4	8	8	8	8	8	12	12	16	16	20	20	20
<b>N-HOLES PN 16</b>		4	4	8	8	8	8	12	12	12	16	16	20	20	20
<b>PCD PN 10</b>		125	145	160	180	210	240	295	350	400	460	515	565	620	725
<b>PCD PN 16</b>		125	145	160	180	210	240	295	355	410	470	525	585	650	770

Design Mechanical Data, Dimension, Materials and weight are subject to change without notice