



GATE VALVE GAF-104 M

Gate Valves, Metal seated Full bore,
Inside screw , bolted bonnet,
Fully removable part,
Free maintenance, 100% water tight
Non Rising Stem

Design According to DIN 3352,
AWWA C-500 & BS 5163

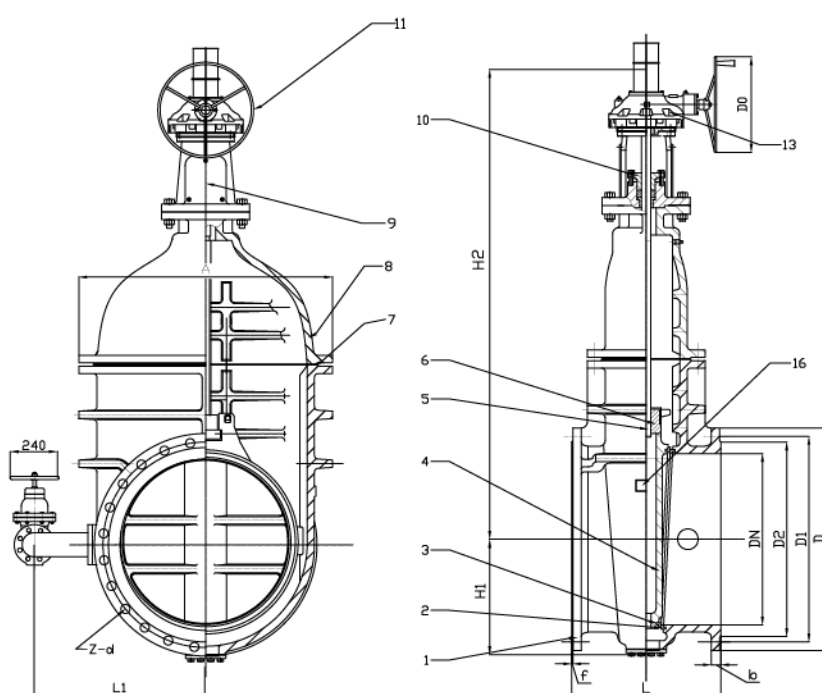
Application	For water, sewage and waste water plant
Working Pressure	10 /16 Bars
Working Temperature	120° C
Face to Face	BS 5163 / DIN 3202 F5 / DIN 3202 F4
Flanges	According to DIN 2501= ISO 2531, drilled PN10, PN16 BS 4504 PN10, PN16
Operation	By Handwheel / Electric Motor / Pneumatic Actuator.
Closing	Clockwise closing (counter-clockwise on request)
Sealing Pressure	10 /16 Bar, according to DIN 3230 / EN 12266-1
Sealing on Stem	Gland packing, replaceable with valve under pressure
Coating	Epoxy Coating inside and outside, 200 - 300 microns

Ductile Iron : GGG 50/40 To DIN EN 1563

Design Mechanical Data, Dimension , Materials and weight are subject to change without notice



GATE VALVE GAF-104 M



No.	Component	Material
1	Body	Ductile Iron GGG40/50
2	Gates Sealing ring	304/ 316 L
3	Body Sealing ring	304/ 316 L
4	Gate	Ductile Iron GGG40/50
5	Stem	304/ 316 L
6	Stemnut	LG-2
7	"D" Sealing	NBR
8	Bonnet	Ductile Iron GGG40/50
9	Transmission Support	Ductile Iron GGG40/50
10	Packing Gland	Ductile Iron GGG40/50
11	Handwheel	Ductile Iron GGG40/50
12	Support	Ductile Iron GGG40/50
13	Transmission Actuator	

DN	L		H1	H2	D	D1	D2	n-d
	DIN	BS5163						
350	550	381	270	1150	520	470	429	16-23
400	600	406	300	1275	580	525	480	16-31
450	650	432	330	1350	640	585	548	20-31
500	700	457	360	1500	705	650	609	20-34
600	800	508	410	1700	840	770	720	20-37
700	900	610	470	1800	910	840	794	24-37
800	1000	660	530	2000	1020	950	901	24-40
900	1100	711	590	2400	1120	1050	1001	28-40
1000	1200	811	650	2500	1255	1170	1112	28-43
1200		960	760	2780	1485	1390	1328	32-49
1400		1060	880	2950	1685	1590	1530	36-45
1600		1100	1000	3160	1930	1820	1750	40-52

Design Mechanical Data, Dimension , Materials and weight are subject to change without notice