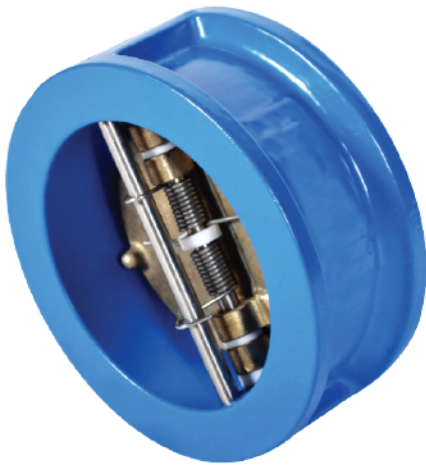




## CHECK VALVE CHW-112



Wafer Type check valve is general purpose valve that is stronger ,lighter and smaller than conventional check valve .

The installed valve is Inherently more rigid than an equivalent at walled pipe and there is no need for exposed foundations.

The valve is suitable for vertical / horizontal Mounting.

Design according to ANSI 125 Lbs and can be replaced to BS, DIN ,ISO Standard.

Primary Service Pressure Non Shock (PSI)	Hydrostic Test Pressure (PSI)	
	Shell	Seat
PN	PN x 1.5	PN x 1.1

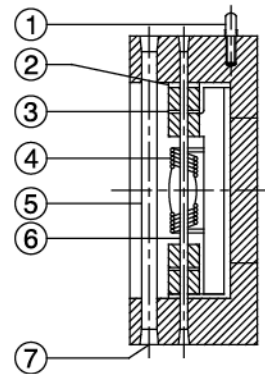
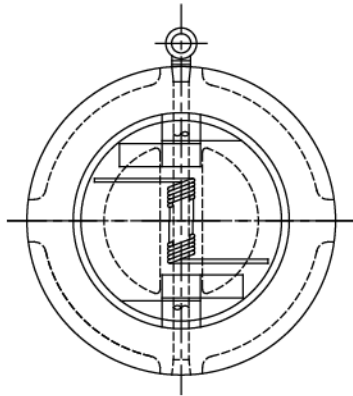
<b>Application</b>	For water and natural liquids ,fire protection main line
<b>Working Pressure</b>	125 PSI Non Shock
<b>Working Temperature</b>	Up to 70°
<b>Face to Face</b>	(Please see Table)
<b>Flange</b>	According to ANSI B 16. class 125/ 150 lbs
<b>Coating</b>	Epoxy Power Coating 200 - 300 microns

*Design Mechanical Data, Dimension , Materials and weight are subject to change without notice*

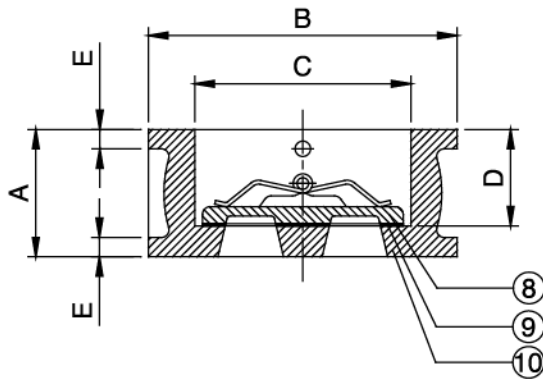


# SAUDI PIPES SYSTEMS CO.

## CHECK VALVE CHW-112



### Components List:



1-Eye Bolt	Steel A-489
2-Teflon Washer	Teflon
3-Teflon Washer	Teflon
4-Spring	St. Steel A-479-304
5-Fixed pin	St. Steel A-479-304
6-Pin	St. Steel A-479-304
7-Pluge	Steel A-320
8-Wing	Cast Bronze B-62
9-SeatSteel	NBR
10-Body	Cast Iron A126 CL

Note : No. 1 is for valve size 6" and Above only

SIZE	Inch	2	2-1/2	3	4	5	6	8	10	12
MARK	mm	50	65	80	100	125	150	200	250	300
A	mm	54	54	57	64	70	76	95	108	144
B	mm	107	127	142	162	192	222	273	329	384
C	mm	60	73	89	114	141	168	219	273	324
D	mm	41	43	46	47.5	51	52	66	69	99.5
E	mm	10	10	10	10	10	10	10	13	15
F	mm	40	48	62	80	101	126	170	213	260
FLOW AREA	CM <sup>2</sup>	8.1	11.3	16.9	32.6	55	92.1	167.2	273.2	439.8

*Design Mechanical Data, Dimension, Materials and weight are subject to change without notice*