



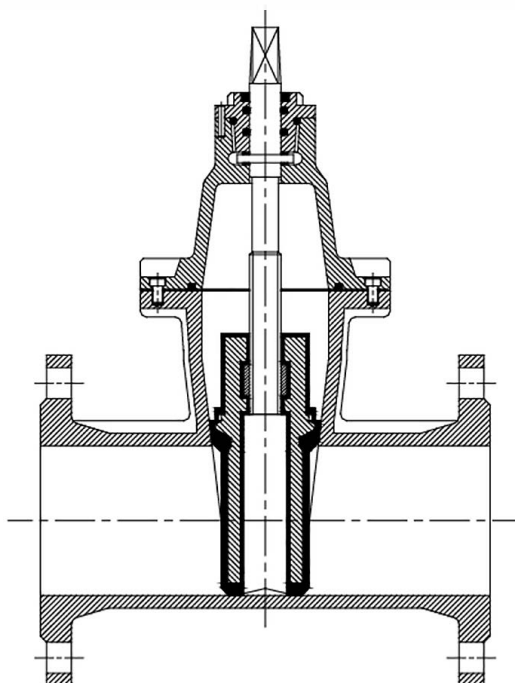
SAUDI PIPES SYSTEMS CO.

GATE VALVE GAF-103



Gate Valves, Resilient seated, full bore,
Inside screw bolted bonnet,
Fully removable part,
Free maintenance, 100% water tight
Non Rising Stem

Design According to DIN 3230 Part - 4



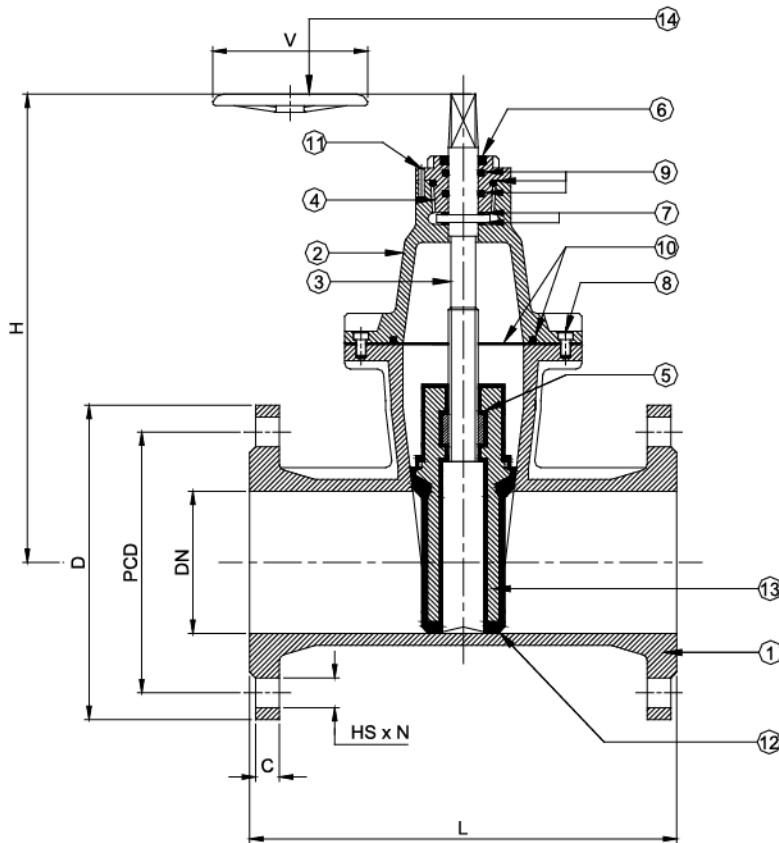
Application	For water and neutral liquids and sewage water
Working Pressure	10 / 16 / 25 Bars
Working Temperature	70° (up to + 110° on request)
Face to Face	According to DIN : 3202 F4
Flange	According to BS 4504 / DIN 2501 / ISO 2531
Operation	Handwheel, extension spindle, flange adaptor, stem cap
Closing	Clockwise Direction
Wedge	Auto-guided in body with guide ribs ,Wedge with draining hole to avoid retention of water and ice
Sealing Pressure	16 Bars, according to DIN 3230/3-CI, the rubber coating of the wedge works always on compression
Sealing on Stem	Double packing, replaceable with valve under pressure and in the fully open position-with dust seal above the stem
Coating	Epoxy powder inside and outside 200-300 microns,
Ductile Iron	Ductile Iron GGG 50 to DIN EN 1563

Design Mechanical Data, Dimension , Materials and weight are subject to change without notice



SAUDI PIPES SYSTEMS CO.

GATE VALVE GAF-103



COMPONENTS LIST :

1	BODY	Ductile Iron GGG50
2	COVER	Ductile Iron GGG50
3	STEM (SPINDLE)	St. steel 304/ 316 L
4	LOCKING NUT	Brass Ms58 / Bronze
5	STEM NUT	Bronze C6680
6	PROTECTING RING	Neopren or EPDM
7	SLIDE RING	Hostaform
8	CYLINDER SCREW	St. steel 304/ 316 L
9	O-RING	Perbunan or EPDM
10	O-RING / GASKET	Perbunan or EPDM
11	CYLINDER PIN	St. steel 304/ 316 L
12	RESILIENT WEDGE	Vulcanized with NBR or EPDM
13	WEDGE	Ductile Iron GGG50
14	HANDWHEEL	Steel / Ductile Iron GGG50

Dimensions in mm

PRESSURE TESTING: BODY – (1,5 x PN) SEAT – (1,1 x PN)

DN	50	65	80	100	125	150	200	250	300	350	400	450	500	600
L DIN3202	150	170	180	190	200	210	230	250	270	290	310	330	350	390
D	165	185	200	220	250	285	340	405	460	520	580	640	715	840
V	200	250	250	300	300	300	350	500	500	-	-	-	-	-
H	266	296	326	354	410	435	521	617	709	885	951	1051	1213	1421
HS PN 10	19	19	19	19	19	23	23	23	23	24	29	29	29	32
HS PN 16	19	19	19	19	19	23	23	28	28	29	32	32	35	38
N-HOLES PN 10	4	4	8	8	8	8	8	12	12	16	16	20	20	20
N-HOLES PN 16	4	4	8	8	8	8	12	12	12	16	16	20	20	20
PCD PN 10	125	145	160	180	210	240	295	350	400	460	515	565	620	725
PCD PN 16	125	145	160	180	210	240	295	355	410	470	525	585	650	770

Design Mechanical Data, Dimension , Materials and weight are subject to change without notice